



- > Export Asset data
- > Drape 3D road markings
- > Level 2 BIM Product
- > Intelligent 1040 Tigertail
- > Grip editing
- > Automatic Quantification
- > “No” object enablers needed
- > AutoCAD® Civil 3D® Surface Integration

For a detailed overview of the software, please  
visit [www.transoftsolutions.com/uk](http://www.transoftsolutions.com/uk)

Wish to know more?  
Check this out



EUROPEAN HEADQUARTERS  
Netherlands +31 (0)10 258 78 78

EUROPEAN OFFICES  
UK +44 (0)161 222 0208  
Germany +49 (0)220 398 330 31

EMAIL US  
[infoEU@transoftsolutions.com](mailto:infoEU@transoftsolutions.com)

WEBSITE  
[www.transoftsolutions.com](http://www.transoftsolutions.com)



Your local Transoft Solutions Partner:

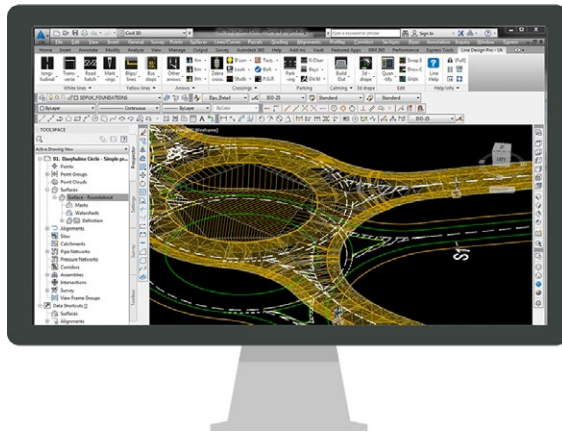


United Kingdom  
LINE DESIGN PRO™

HIGHLY EFFICIENT ROAD MARKING SOFTWARE

## STAY ON TRACK WITH PRODUCTIVITY-ENHANCING FEATURES

Trusted by Atkins Global, AECOM, AMEC, ARCADIS, CH2M, PB.



Line Design Pro UK is add-on for AutoCad that makes designing complex road marking drawings simple from: parking bays, crossings, tactiles & all types of lining from TSRGD all with minimal effort.

Centre line hatching can be added to your AutoCad drawing as an intelligent object in seconds.

Line Design Pro UK supports grip editing on many of the already powerful line design tools available.

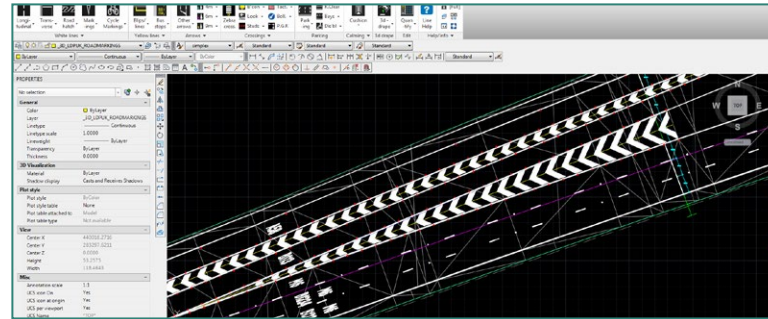
## 3D DRAPE

2d road markings can be draped over a 3d surface with a single button press or individually selected for more precise control. The markings follow the Civil 3d corridor exactly, this is ideal for use in 3d drive views where schemes can be viewed in real time, or used in presentations.

USED ON HIGHWAYS ENGLAND PROJECTS

## ROAD HATCHING

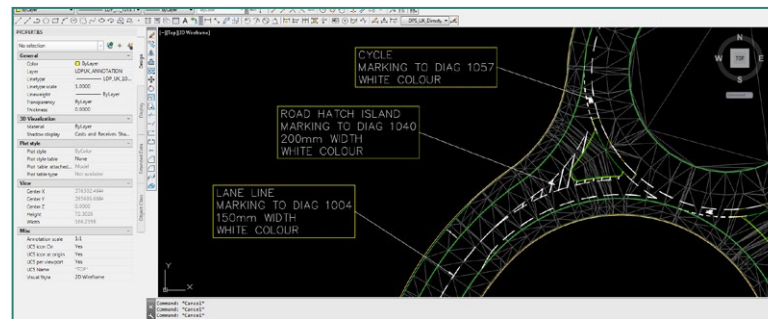
1040 series road markings or Tigertails can be designed by drawing the markings to suit or they can be attached to existing polylines. Other options such as knockout Zones can be removed while still retaining the intelligence of the marking and adding coloured surfacing is added by a check box.



Tigertail 1040 markings.

## ANNOTATE MARKINGS

All road markings can be annotated with a one button press and selection. Any annotation box option can be edited to suit your company design rules from the text height and colour to the style of the leader arrow and font.

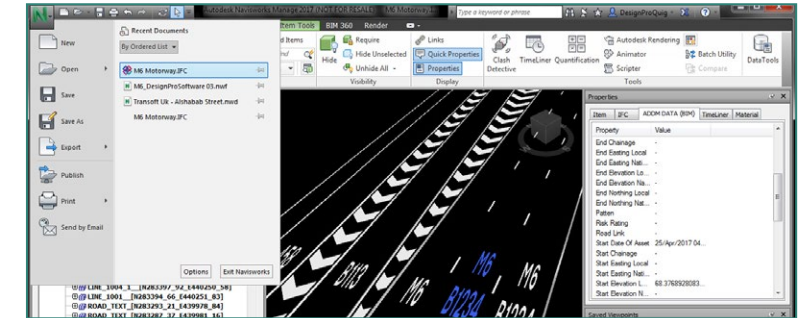


Customisable annotation.

## IFC EXPORT

Industry Federation Class or IFC by Buildingsmart is the standard BIM format in the Engineering industry for the collaboration of

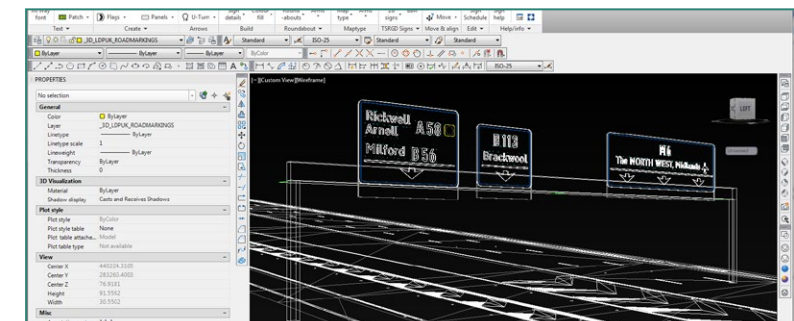
data rich 3D models in design projects. Road markings can now be exported to .ifc format with a single button press ready for importing into BIM Collaboration software such as Navisworks. The automatic nature means you are not tied up manually adding together lines yourself, and the data is laid in a simple to read tabular format.



Road markings exported to IFC.

## BIM

Line Design Pro UK is a BIM Level 2 product: we produce 2d / 3d models and assets for collaboration and we export to GIS and IFC formats to help Engineers work together simpler. ADMM Data is attached to our assets so users do not have to worry if this is being done, the task is automatic. Our drawings are all sharable because we don't use object enablers to complete the BIM lifecycle.



3D Road markings draped over a surface.

- Sign Design Pro and Line Design Pro are able to design signs and road markings to TSRGD.
- Compatible with Autodesk AutoCAD® and AutoCAD® Civil 3D®.